

PHILIPS

Service
Manual



Azur 8000 series

**DST8020
DST8050**

DST8021

DST8030

DST8040

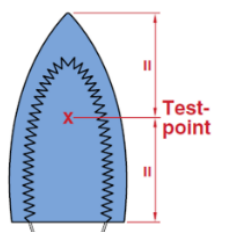
DST8041

Contents

	Page
1. Important Repair Instructions	3
2. Product Information	
- Functions/ Features Information	4
- Product Matrix	5
3. Troubleshooting	7
4. Disassembly and Reassembly Instructions	8
5. Service Lists	17
6. Revision History	24

Important Repair Instructions

1. Only skilled personnel should carry out the repair.
2. Verification test to carry out as follows, to determine the problem:
 - a. Ensure product are properly assembled
 - b. Power on
 - c. Water Tank to be filled up to **Maximum** level
3. After repaired, the appliance must function properly, following test to be carried out:
 - a. **Power-on check**
Powered ON with socket equipped with Residual Current Circuit Breaker (RCCB) or Earth Leakage Circuit Breaker (ELCB) to ensure no electrical hazard risk to end consumer.
 - b. **Soleplate temperature**
Check the soleplate temperature is within IEC temperature.
Measure the temperature of the Soleplate after the iron has reached steady state i.e connected to the mains for at least 15 minutes. The table below shows the temperature requirement.

Soleplate temperature (Deg C)	
90 ~ 155	

- c. **Water leakage**
Check that there is no water leakage from any part of product during operation.
- d. **Functionality**
Check the functionality of the product:
 - Steaming & ASO (for ASO version only) is working properly.
 - Buttons: no sluggish, jammed and loose.
 - Filling Door: able to open freely and close with “click” sound
- e. **Loose part**
Check that there are no loose parts such as extra screws in the product that can cause short circuit or product malfunction.

Product Information

Functions/ Features information

Easy to use

- Optimal Temp Technology
- Quick Calc Clean removal in 15 seconds
- Safety auto shut off (for ASO version only)
- Robust heel rest
- Extra large filling hole
- Tap water suitable
- Water Tank Capacity: 300ml with Pump & 350ml without Pump

Fast crease removal

- Soleplate: SteamGlide Advanced/ Elite
- Power" upto 3000W
- Continuous steam output: upto 85g/min
- Turbo Steam Power: Upto 260g
- Vertical Steam

Drip Stop

- The Water Tank Bottom has a Valve that is Controlled by a bimetal disc on the Soleplate. Water is only released into Steam Chamber via the Tank Valve when the Soleplate temperature Is high enough. When the Soleplate temperature is too low, the Tank Valve is closed. This prevent water from dripping onto garment.

Water Advice

- In case you live in an area with hard water, (eg: water hardness more than 8dGH), it is Recommended to use a mixture of 50% tap water And 50% demineralized water.

Steam boost

- The steam boost helps to remove stubborn wrinkles.

Soleplate

- Soleplate is the best Philips Soleplate for Steam Iron. It has great scratch resistance, glides excellent and it is easy to clean.

Vertical Steam

- This features a steam boost in vertical position to remove wrinkles in hanging garments

Electronic Safety Shut Off

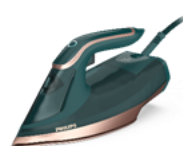
- The power to the heater is cut off when the Iron has been motionless. The ASO lights starts blinking when the iron is moved. It is automatically switched On.

Product size & weight

- Product dimension (W x H x L)
134 x 158 x 317 mm
- Weight of Iron: 1.78Kg

Product Information

Product Matrix



	DST8020/20 DST8020/21 DST8020/26	DST8021/30	DST8030/70	DST8040/30
Colour	Light blue	Purple/Pink	Green/Opal	Dark Purple
Power (W)	/20: 3000 /21: 2400 /26: 3000	3000	3000	3000
Continuous steam (g/min)	/20: 55 /21: 45 /26: 55	55	70	80
Steam boost	/20: 240 /21: 210 /26: 240	240	240	260
Water Tank capacity (ml)	300	300	350	350
Cord length (m)	2.5	2.5	2.5	2.5
Optimal Temp	Yes	Yes	Yes	Yes
DynamicQ Technology	No	No	Yes	Yes
TurboSteam Pump	No	No	Yes	Yes
Drip stop	Yes	Yes	Yes	Yes
Vertical steam	Yes	Yes	Yes	Yes
Auto shut-off	Yes	Yes	Yes	Yes
Calc solution	Quick Calc Release	Quick Calc Release	Quick Calc Release	Quick Calc Release
Calc clean reminder	No	No	No	No

Product Information

Product Matrix

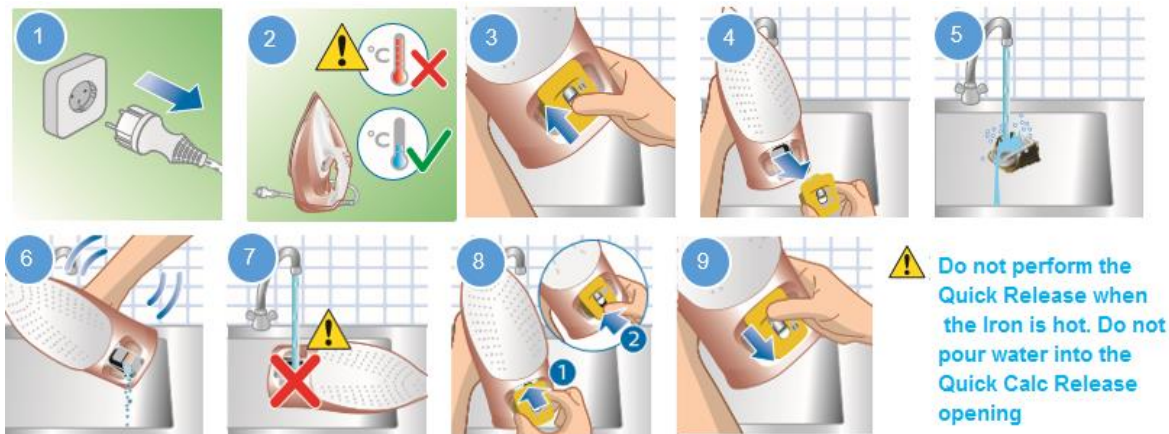


	DST8041/80 DST8041/86	DST8050/20 DST8050/21 DST8050/26
Colour	Black	Dark Blue
Power (W)	3000	/20: 3000 /21: 2400 /26: 3000
Continuous steam (g/min)	80	/20: 85 /21: 55 /26: 85
Steam boost	260	/20: 260 /21: 240 /26: 260
Water Tank capacity (ml)	350	350
Cord length (m)	2.5	2.5
Optimal Temp	Yes	Yes
DynamicQ Technology	Yes	Yes
TurboSteam Pump	Yes	Yes
Drip stop	Yes	Yes
Vertical steam	Yes	Yes
Auto shut-off	Yes	Yes
Calc solution	Quick Calc Release	Quick Calc Release
Calc clean reminder	No	No

Troubleshooting

Defect	Occurance (caused by)	Solution
No heating/ power	Soleplate Assy Mainscord PCBA UI Module	Change Soleplate Assy Change Mainscord & Closed End Connectors Change PCBA & Closed End Connectors Change UI Module (Pump Version only)
Water leaking	Water Tank Assy Soleplate Assy Soleplate Gasket Calc Collector Assy	Change Water Tank Assy Change Soleplate Assy Change Soleplate Gasket Change Calc Collector Assy
Door or knob jammed/ can not close or open/ slide	Inlay Assy Steam Slider	Change Inlay Assy Change Steam Slider (non Pump version only)
Too less steam	Soleplate Assy full of scale	Refer to descaling instruction stated below
No Steam	Soleplate Assy Pump Assy UI Module	Change Soleplate Assy Change Pump Assy Change UI Module (Pump Version only)
Plastic molded part damaged/ Broken/short molding/sharp edges	Cover Sub Cover Water Tank Assy Pump Cover Printed Inlay Assy Backplate Cover Molded Backplate Molded Calc Collector Body Calc Collector Door Assy Swivel Molded Steam Slider	Change Cover Change Sub Cover Change Water Tank Assy Change Pump Cover Printed Change Inlay Assy Change Backplate Cover Molded Change Backplate Molded Change Calc Collector Body Change Calc Collector Door Assy Change Swivel Molded Change Steam Slider
Torn/broken/harden silicone	Dosing Seal SOS Seal CC Body Seal Soleplate Gasket	Change Dosing Seal Change SOS Seal Change CC Body Seal Change Soleplate Gasket

Descaling Instruction:



Disassembly Instruction

Remove	BACKPLATE COVER 8
Remove	Screw A (2X)
Remove	BACKPLATE MOLDED 9
Remove	PUMP COVER PRINTED 5
Remove	PUMP ASSY 15
Disconnect	Wire

Refer to step 1-4 for details in page 9

Remove	BALL SWIVEL 13 (from WATER TANK)
Remove	Screw B (2X)
Remove	Clamping Plate
Disconnect	all wire connection
Remove	Screw H (2X)
Remove	MAINSCORD 18
Remove	BALL SWIVEL 13 (from MAINSCORD)
Remove	PUMP COVER 5 (from MAINSCORD)

Refer to step 8 -11 for details in page 9~10

Remove	Screw E (2X)
Remove	SUB COVER 3
Remove	Screw F (3X)
Remove	Fibre Washer & Insulation Sheet
Remove	Cover Seal
Remove	CALC COLLECTOR DOOR ASSY 11
Remove	COVER 2

Refer to step 17 -22 for details in page 11

Open	Filling Door
Remove	Rubber Bung
Remove	Screw D
Loosen	all wires
Remove	CLOSED END CONNECTOR 16 & 17

Refer to step 5-7 for details in page 9

Remove	STEAM SLIDER MOLDED 19 (Non Pump version only)
Remove	Screw C
Remove	INLAY ASSY 7
Disconnect	Ribbon Cable (Pump version only) *
Remove	Screw I (2X) & UI PCBA 20 (Pump version only)
Remove	WATER TANK ASSY 4
Loosen	all wires
Remove	Light Guide & PCBA 14

Refer to step 12 -16 for details in page 10

Remove	Ryton Ring (3x)
Remove	DOSING SEAL 6
Remove	SOS SEAL 21
Remove	Screw G (4X)
Remove	CALC COLLECTOR BODY SEAL 12
Remove	CALC COLLECTOR BODY 13
Remove	SOLEPLATE GASKET 22
Remove	SOLEPLATE ASSY 1

Refer to step 23 -26 for details in page 11

*Refer to page 16 for detail disassembly instruction of Ribbon Cable

Disassembly Instruction

Before dismantling :



Ensure the plug is disconnected from the mains and Soleplate is not hot.

1



Remove BACKPLATE COVER 8

2



Remove 2x Screw A & remove BACKPLATE MOLDED 9

3



Lift up PUMP COVER PRINTED 5 & remove it

4



Remove PUMP ASSY 15 and remove wire Connections (applicable for Pump version only)

5



Open Filling Door & remove Rubber Bung

6



Remove Screw D

7



Loosen all wires, remove CLOSED END CONNECTOR 16 & 17 (refer to page 15 for details)

8



Remove BALL SWIVEL 13

9



Remove 2x Screw B & Clamping Plate

10



Untwist and remove all wire connection,
remove 2x Screw H

11



Remove MAINSCORD 18, remove BALL
SWIVEL 13 & PUMP COVER 5

12



Remove STEAM SLIDER MOLDED 19
(NON-PUMP version only)

13



Remove Screw C & remove INLAY ASSY 7

14



Disconnect Ribbon Cable (Pump version only)
**Refer to page 16 for detail disassembly
instruction of Ribbon Cable**

15



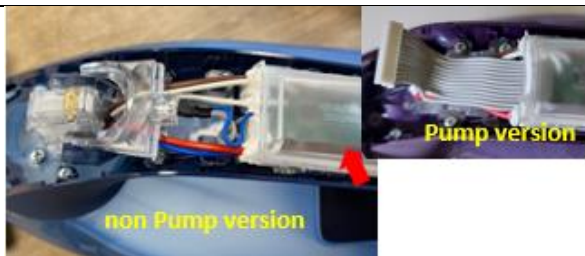
Remove 2x Screw I & remove UI PCBA 20
(Pump Version only)

16



Remove WATER TANK ASSY 4 & loosen all wires

17



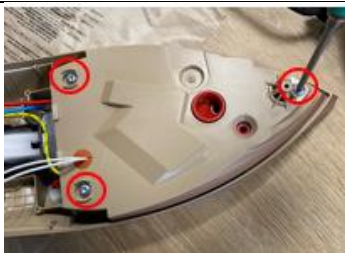
Remove Light Guide & remove PCBA 14
Refer to page 16 for detail disassembly instruction of Ribbon Cable for Pump version

18



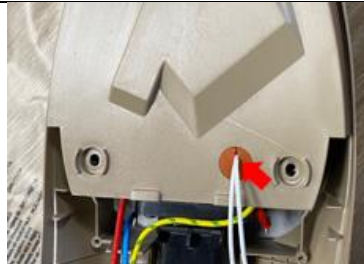
Remove 2x Screw E, remove SUB COVER 3

19



Remove 3x Screw F & Washer, remove Insulation Sheet

20



Remove Cover Seal

21



Unlock & remove CALC COLLECTOR DOOR ASSY 11

22



Remove COVER 2

23



Remove 3x Ryton Ring

24



Remove DOSING SEAL 6 & SOS SEAL 21

25



Remove 4x Screw G, remove CALC COLLECTOR SEAL 12 & remove CALC COLLECTOR BODY 13

26



Remove SOLEPLATE GASKET 22 & remove SOLEPLATE ASSY 1

Reassembly Instruction

Cautions:

- a. before fastening screw, relocate the screw with first thread. Once done fasten the screw.
- b. Do not drop, hit or knock the ASO (for ASO version only).
- c. Ensure there is click sound after Connector to Terminal engage. Refer to wiring diagram for detail



9



Assemble & lock the CALC COLLECTOR DOOR ASSY 11

10



Assemble PCBA 14 & assemble Light Guide

11



Dress wire and Assemble WATER TANK ASSY 4

12



Assemble & fasten 2x Screw H

13



Assemble PUMP COVER 5, assemble BALL SWIVEL 13 to MAINSCORD 18

14



Assemble MAINSCORD 18, assemble Clamping Plate, assemble & fasten 2x Screw B

15



Connect all Wires, assemble CLOSED END CONNECTOR 16 & 17 per instruction in page 15

16



Connect & dress Pump wire and assemble PUMP ASSY 15 (Pump version only)

17



Assemble BALL SWIVEL 13 to WATER TANK ASSY 15

18



Assemble PUMP COVER 5

19



Assemble BACKPLATE MOLDED 9, assemble & fasten 2x Screw A

20



Assemble BACKPLATE COVER 8

21



Assemble UI PCBA 14, assemble & fasten 2x Screw I

22



Connect Ribbon Cable (Pump version only) to UI PCBA 14

23



Assemble INLAY ASSY 7, assemble & fasten Screw A

24



Assemble & fasten Screw D

25



Assemble Rubber Bung and assemble Tank Seal

26



Assemble STEAM SLIDER MOLDED 19 (Non Pump version only)

Disassembly and Reassembly Instruction (Crimp Connector)

During disassembly and repair, wiring and crimp connections instructions*

Reference Document

1. IEC 61210:1993 "Flat quick-connect terminations for electrical copper conductors – Safety requirements"
2. IEC 60352-2:1990 (amd. 1:1996 + amd. 2:2002) "Solderless crimped connections – General requirements, test methods and practical guidance"

What does that mean for Service?

Whenever we replace an electrical component, we need to open such connection.

The easiest way is to reopen the pressed crimp housing by attacking from the side with pliers



Note:

Do not cut the old crimp as this cause shortage of the cable and might be an issue afterwards. Always connect the wires with a new 2 or 3 wire Crimp Housing

In case the old crimp can't be removed without damaging the small wires

- a) Cable is long enough for further usage -> cut the damage part remove isolation and fit into new crimp as described
- b) Cable is not long enough -> related part need to be replaced

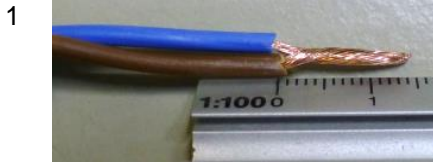
Required tool when replacing crimp connectors:

Ratchet Crimping Tool

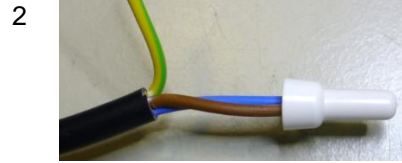
- Oval crimp tool for insulated cable connectors
- 0.5mm² & 6mm²

Prepare the cable:

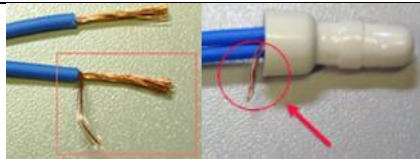
"Never solder the wire strands before crimping – soldering is not allowed!"



Twist the wires together along the entire lengths [13mm (0,51 in) Min & 16mm (0,63 in) Max] of the scrip.

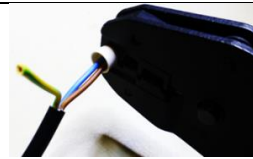


Insert the cable into Crimp Housing



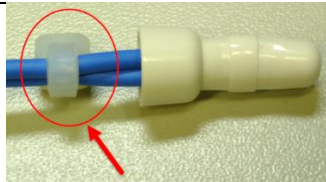
3 **Don't miss any single "hair"!!!**

The result of this can have serious safety impact, as wires can touch any metal part.
Cause electrical shock!!!!



4 Center the crimp tool on the sleeve,
Crimp the housing with 6 kg/cm²

!!!Please do pull test that wires are strongly fixed!!!



5

Tie wraps are used as strain relief for these connector types as they do not inherently have that. Essential part.
In case the original cable was equipped with tie wrap you need to add new one.

6 **WARNING:**

Take care that you tight the crimp fully.
If it is not done properly it can cause inner sparking and cause overheating and in worst case a fire!

- Please aligned the crimp in such a way that higher humidity can not captured water like swimming pool.
- The open side should always look down

Disassembly and Reassembly Instruction (Ribbon Cable)

Should Ribbon Cable from product need to be removed, below instruction need to be followed:

Problem: Due to small opening at Inlay when disconnecting the ribbon cable, it will tend to pull the ribbon cable slanted & cause deformation on connecting pin and resulted in poor connection.

Tool required: No

What does it mean for service?

Whenever disassembly of Ribbon Cable, we need to ensure following are followed:

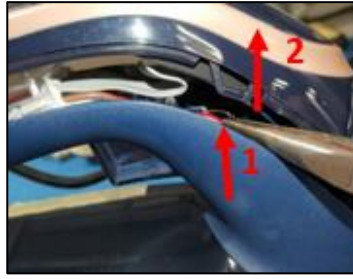
To free up the Pump black wire to UI module so that we have enough space to unplug the Ribbon Cable to avoid pulling at slanted angle that further damaged/ deformed the connecting pin.



Open-up to access the cable at the Bottom of Tank



Free up the black wire per picture above



Free up the black pump wire so that the Inlay can be slowly lifted



Make sure you hold all the cable and pull vertically to disassembly the Ribbon Cable

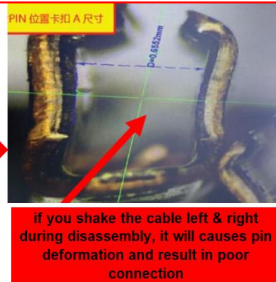
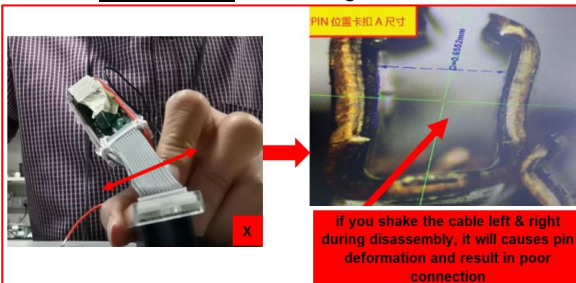
Caution:

When disassembly of Ribbon Cable:

DO hold all the cable and pull vertically



DO NOT shake cable to left & right



if you shake the cable left & right during disassembly, it will causes pin deformation and result in poor connection

DO NOT pull cable in slanted way



Service Lists

POS	Description	DST8020/20 889011520300 EU9	DST8020/20 889011520470 KOREA	DST8020/21 889011521160 SWITZERLAND	DST8020/21 889011521190 DENMARK FINLAND NORWAY SWEDEN
1	SOLEPLATE ASSY	423902291501	423902291501	423902291511	423902291511
2	COVER MOLDED	423902291311	423902291311	423902291311	423902291311
3	SUB COVER	423902291551	423902291551	423902291551	423902291551
4	WATER TANK ASSY	423902291601	423902291601	423902291611	423902291611
5	PUMP COVER PRINTED	423902291441	423902291441	423902291441	423902291441
6	DOSING SEAL	423902292091	423902292091	423902292091	423902292091
7	INLAY ASSY	423902291341	423902291341	423902291341	423902291341
8	BACKPLATE COVER MOLDED	423902291191	423902291191	423902291191	423902291191
9	BACKPLATE MOLDED	423902291231	423902291231	423902291231	423902291231
10	CALC COLLECTOR BODY	423902291271	423902291271	423902291271	423902291271
11	CALC COLLECTOR DOOR ASSY	423902291281	423902291281	423902291281	423902291281
12	CC BODY SEAL	423902291291	423902291291	423902291291	423902291291
13	SWIVEL MOLDED	423902283861	423902283861	423902283861	423902283861
14	PCBA MAIN ASSY	423902291401	423902291401	423902291401	423902291401
16	CLOSED END CONNECTOR	423902280591	423902280591	423902280591	423902280591
17	CLOSED END CONNECTOR	423902291301	423902291301	423902291301	423902291301
18	MAINSCORD	423902283781	423902283781	423902291741	423902283781
19	STEAM SLIDER	423902291531	423902291531	423902291531	423902291531
21	SOS SEAL	423902282691	423902282691	423902282691	423902282691
22	SOLEPLATE GASKET	423902291671	423902291671	423902291671	423902291671

Service Lists

POS	Description	DST8020/26 889011526150 UK	DST8020/26 889011526600 MEA	DST8021/30 889011630300 EU9	DST8021/36 889011636600 MEA
1	SOLEPLATE ASSY	423902291501	423902291501	423902291501	423902291501
2	COVER MOLDED	423902291311	423902291311	423902291321	423902291321
3	SUB COVER	423902291551	423902291551	423902291551	423902291551
4	WATER TANK ASSY	423902291601	423902291601	423902291621	423902291621
5	PUMP COVER PRINTED	423902291441	423902291441	423902291451	423902291451
6	DOSING SEAL	423902292091	423902292091	423902292091	423902292091
7	INLAY ASSY	423902291341	423902291341	423902291351	423902291351
8	BACKPLATE COVER MOLDED	423902291191	423902291191	423902291201	423902291201
9	BACKPLATE MOLDED	423902291231	423902291231	423902291241	423902291241
10	CALC COLLECTOR BODY	423902291271	423902291271	423902291271	423902291271
11	CALC COLLECTOR DOOR ASSY	423902291281	423902291281	423902291281	423902291281
12	CC BODY SEAL	423902291291	423902291291	423902291291	423902291291
13	SWIVEL MOLDED	423902283861	423902283861	423902283861	423902283861
14	PCBA MAIN ASSY	423902291401	423902291401	423902291401	423902291401
16	CLOSED END CONNECTOR	423902280591	423902280591	423902280591	423902280591
17	CLOSED END CONNECTOR	423902291301	423902291301	423902291301	423902291301
18	MAINSCORD	423902283831	423902283831	423902283781	423902283831
19	STEAM SLIDER	423902291531	423902291531	423902291541	423902291541
21	SOS SEAL	423902282691	423902282691	423902282691	423902282691
22	SOLEPLATE GASKET	423902291671	423902291671	423902291671	423902291671

Service Lists

POS	Description	DST8030/70 889011770300 EU9	DST8040/30 889011830300 EU9	DST8041/80 889011980300 EU9	DST8041/88 889011988710 CHINA
1	SOLEPLATE ASSY	423902291521	423902291521	423902291521	423902292021
2	COVER MOLDED	423902291331	423902291331	423902291331	423902291331
3	SUB COVER	423902291551	423902291551	423902291551	423902291551
4	WATER TANK ASSY	423902291631	423902291641	423902291651	423902292031
5	PUMP COVER PRINTED	423902291461	423902291471	423902291481	423902291481
6	DOSING SEAL	423902292091	423902292091	423902292091	423902292091
7	INLAY ASSY	423902291361	423902291371	423902291381	423902291381
8	BACKPLATE COVER MOLDED	423902291211	423902291201	423902291221	423902291221
9	BACKPLATE MOLDED	423902291251	423902291241	423902291261	423902291261
10	CALC COLLECTOR BODY	423902291271	423902291271	423902291271	423902291271
11	CALC COLLECTOR DOOR ASSY	423902291281	423902291281	423902291281	423902292041
12	CC BODY SEAL	423902291291	423902291291	423902291291	423902291291
13	SWIVEL MOLDED	423902283861	423902283861	423902283861	423902283861
14	PCBA MAIN ASSY	423902291411	423902291421	423902291421	423902292051
15	PUMP ASSY	423902290761	423902290761	423902290761	423902290761
16	CLOSED END CONNECTOR	423902280591	423902280591	423902280591	423902280591
17	CLOSED END CONNECTOR	423902291301	423902291301	423902291301	423902291301
18	MAINS CORD	423902283781	423902283781	423902283781	423902283811
20	UI MODULE	423902291561	423902291571	423902291581	423902292061
21	SOS SEAL	423902282691	423902282691	423902282691	423902282691
22	SOLEPLATE GASKET	423902291671	423902291671	423902291671	423902291671

Service Lists

POS	Description	DST8050/20 889012120300 EU9	DST8050/26 889012126150 UK	DST8050/21 889012121530 AUSTRALIA	DST8041/86 889011986600 MEA
1	SOLEPLATE ASSY	423902291521	423902291521	423902292071	423902291521
2	COVER MOLDED	423902291331	423902291331	423902291331	423902291331
3	SUB COVER	423902291551	423902291551	423902291551	423902291551
4	WATER TANK ASSY	423902291661	423902291661	423902292081	423902291651
5	PUMP COVER PRINTED	423902291491	423902291491	423902291491	423902291481
6	DOSING SEAL	423902292091	423902292091	423902292091	423902292091
7	INLAY ASSY	423902291391	423902291391	423902291391	423902291381
8	BACKPLATE COVER MOLDED	423902291191	423902291191	423902291191	423902291221
9	BACKPLATE MOLDED	423902291231	423902291231	423902291231	423902291261
10	CALC COLLECTOR BODY	423902291271	423902291271	423902291271	423902291271
11	CALC COLLECTOR DOOR ASSY	423902291281	423902291281	423902291281	423902291281
12	CC BODY SEAL	423902291291	423902291291	423902291291	423902291291
13	SWIVEL MOLDED	423902283861	423902283861	423902283861	423902283861
14	PCBA MAIN ASSY	423902291431	423902291431	423902292051	423902291421
15	PUMP ASSY	423902273861	423902273861	423902290761	423902290761
16	CLOSED END CONNECTOR	423902280591	423902280591	423902280591	423902280591
17	CLOSED END CONNECTOR	423902291301	423902291301	423902291301	423902291301
18	MAINSCORD	423902283791	423902288941	423902283821	423902283831
20	UI MODULE	423902291591	423902291591	423902291591	423902291581
21	SOS SEAL	423902282691	423902282691	423902282691	423902282691
22	SOLEPLATE GASKET	423902291671	423902291671	423902291671	423902291671

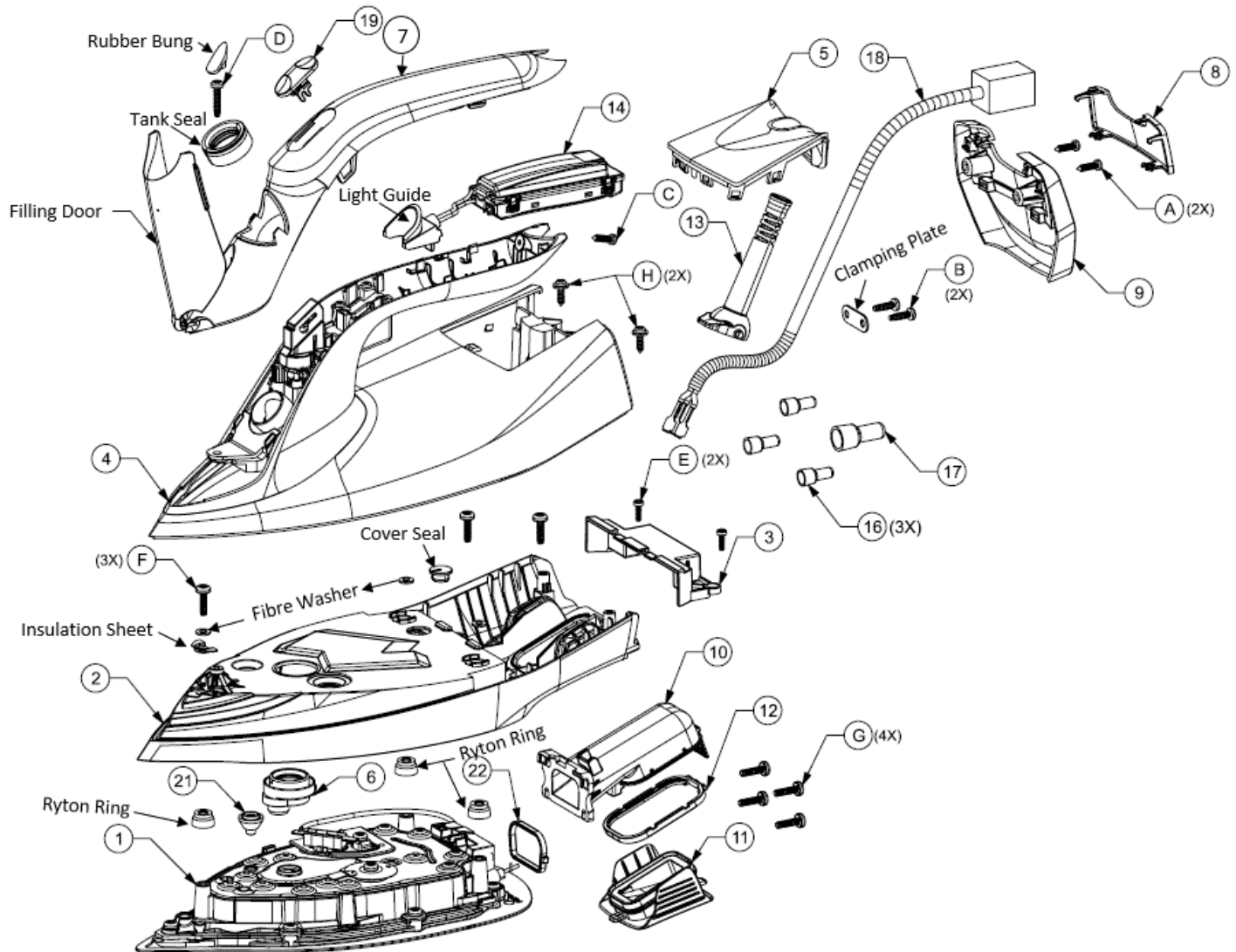
Service Lists

POS	Description	DST8030/70 889011770040 TURKEY	DST8040/30 889011830040 TURKEY	DST8050/20 8890121220040 TURKEY	DST8021/30 889011630040 TURKEY
1	SOLEPLATE ASSY	423902291521	423902291521	423902291521	423902291501
2	COVER MOLDED	423902291331	423902291331	423902291331	423902291321
3	SUB COVER	423902291551	423902291551	423902291551	423902291551
4	WATER TANK ASSY	423902291631	423902291641	423902291661	423902291621
5	PUMP COVER PRINTED	423902291461	423902291471	423902291491	423902291451
6	DOSING SEAL	423902292091	423902292091	423902292091	423902292091
7	INLAY ASSY	423902291361	423902291371	423902291391	423902291351
8	BACKPLATE COVER MOLDED	423902291211	423902291201	423902291191	423902291201
9	BACKPLATE MOLDED	423902291251	423902291241	423902291231	423902291241
10	CALC COLLECTOR BODY	423902291271	423902291271	423902291271	423902291271
11	CALC COLLECTOR DOOR ASSY	423902291281	423902291281	423902291281	423902291281
12	CC BODY SEAL	423902291291	423902291291	423902291291	423902291291
13	SWIVEL MOLDED	423902283861	423902283861	423902283861	423902283861
14	PCBA MAIN ASSY	423902291411	423902291421	423902291431	423902291401
15	PUMP ASSY	423902290761	423902290761	423902273861	-
16	CLOSED END CONNECTOR	423902280591	423902280591	423902280591	423902280591
17	CLOSED END CONNECTOR	423902291301	423902291301	423902291301	423902291301
18	MAINSCORD	423902283781	423902283781	423902283791	423902283781
19	STEAM SLIDER MOLDED	-	-	-	423902291541
20	UI MODULE	423902291561	423902291571	423902291591	-
21	SOS SEAL	423902282691	423902282691	423902282691	423902282691
22	SOLEPLATE GASKET	423902291671	423902291671	423902291671	423902291671

Service Lists

Exploded view

DST802x



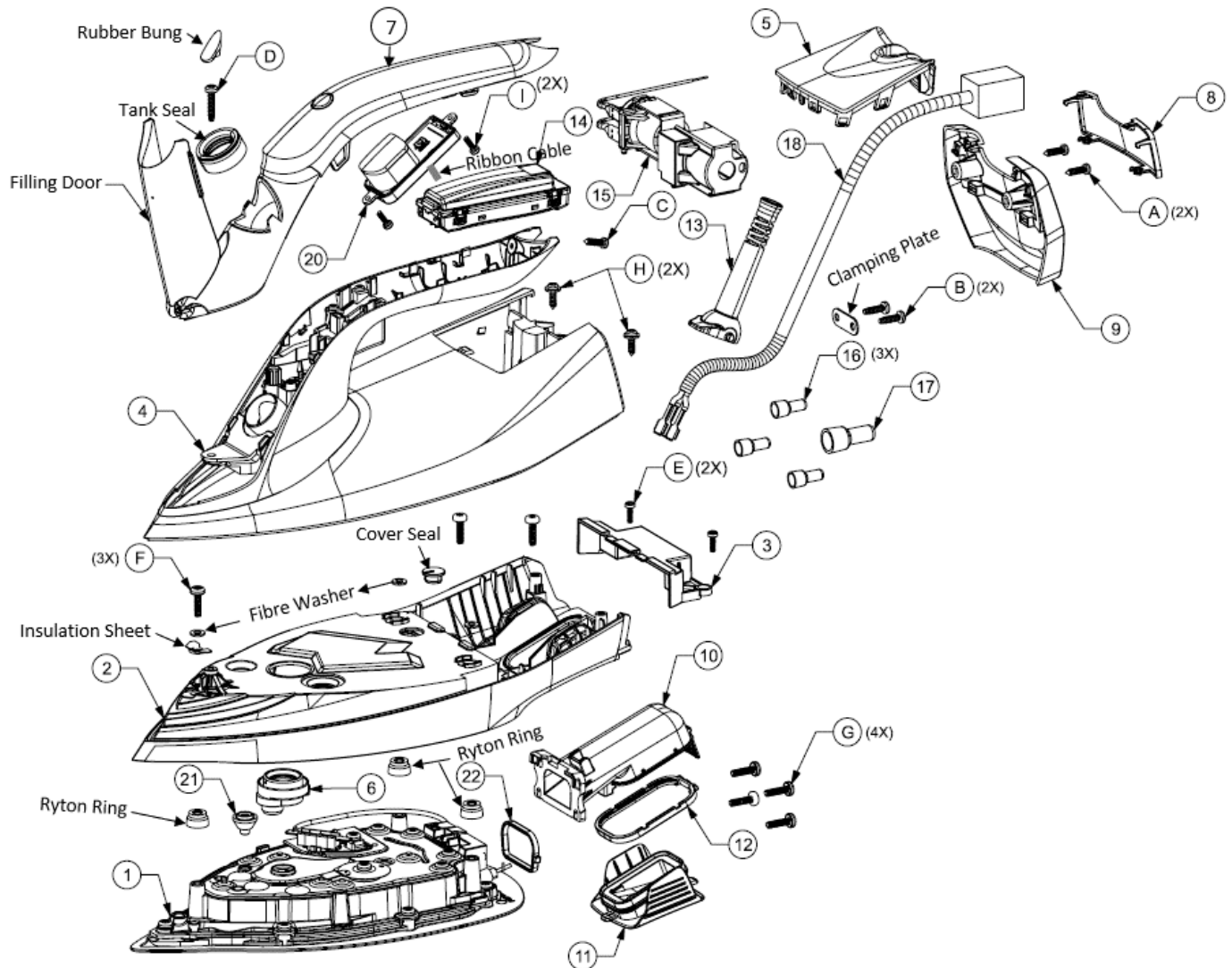
Notes:

Scale: Not to scale

Service Lists

Exploded view

DST803x~DST805x



Notes:

Scale: Not to scale

Revision History

Version	Records	Author	Date
1	New release	Chong Yoke Lan	25-Mar-2022